

Return and Maturity Relationships for Treasury Auctions: Evidence from Turkey*

HAKAN BERUMENT† and ERAY M. YUCEL‡

†*Bilkent University, Turkey*
(berument@bilkent.edu.tr)

‡*Bilkent University, Turkey; Central Bank of the Republic of Turkey*
(eray.yucel@tcmb.gov.tr)

Abstract

The relationship between the interest rate and the maturity of newly issued bonds provides information on the debt dynamics of an economy as well as on the sustainability of its debt. Such information is crucial especially for countries that have debt-rollover concerns due to financial stress and/or macroeconomic instability. This study investigates the relationship between treasury auction maturity, which also dictates the debt maturity, and auction interest rates. When the Turkish treasury auction data from 1988 to 2004 are analysed, a reciprocal linkage between auction interest rates and maturities can be observed, especially for the 1995–2000 period, when there were chronic high inflation, high political uncertainty, high public deficits and unsuccessful attempts at stabilisation. This suggests that under an adverse shock, the Treasury decreases the auction maturity in order not to increase interest rates too much. A change in this reciprocal relationship is also reported for the post-2001 era, which is characterised by decreasing inflation, higher political stability, lower public deficits and successful stabilisation attempts.

*All the views expressed in this paper belong to the authors and do not represent those of the Central Bank of the Republic of Turkey or its staff. The authors would like to thank Hakan Taşçı for his excellent research assistance and Burcu Gürçihan for her help in gathering the data-set. They would also like to thank Anita Akkaş and the anonymous referee for their helpful suggestions. This work is dedicated to the memory of Professor Faruk Selçuk (1958–2005).

JEL classification numbers: C51, H60, H63.

I. Introduction

Effective public debt management is one of the most important tasks for economic policymakers. This is especially important in countries that have debt-rollover concerns due to financial stress and macroeconomic instability. This paper investigates the treasury auction maturity–yield relationship for Turkey and reveals a negative relationship between the auction maturity and interest rates – a downward-sloping yield curve.

The perception of risk determines the way the risk is priced. Calvo and Guidotti (1990a and 1990b) and Missale and Blanchard (1994) state that a government's opportunity to increase inflation is a channel through which perceivable risk emerges on creditors' returns, i.e. a government can induce higher inflation in the medium-to-long term in order to decrease the real value of its debt repayments, which causes a decrease in *ex-post* real returns. Alesina, Prati and Tabellini (1990) consider the possibility of default as another channel.

Regarding the effect of maturity on sustainability, it is emphasised in the literature that short-maturity debt must be refinanced often, which increases financial stress (Giavazzi and Pagano, 1990; Alesina, Prati and Tabellini, 1990; Missale and Blanchard, 1994). Among these, Alesina et al. theoretically assess the management of debt when the government faces the possibility of a confidence crisis. They assert that optimal debt management requires issuing long-maturity debt, which is evenly concentrated at all future dates, and even at relatively higher interest rates, rather than concentrating on short-term only.¹

Calvo and Guidotti (1992) analyse the role of debt maturity in a framework of tax smoothing and time inconsistency of optimal policy.² Their model also suggests that a negative linkage between the maturity of a debt and the associated real return does exist. Drudi and Giordano (2000) study the default risk in a similar manner and show that long-term debt may not be operational when real rates are very high.³

This paper, using the Turkish treasury auction data of the period from July 1988 to December 2004, reveals a statistically significant negative

¹In a later article, Alesina et al. (1992) investigate the default risk for indebted OECD countries and assert that the likelihood of default is low as long as the existing debt is rolled over at reasonable interest rates. There is a positive association between the likelihood of a confidence crisis and the level of debt, where the default premium is positively associated with the size of the debt and negatively associated with average maturity.

²In Calvo and Guidotti (1992), optimality is achieved with perfect tax smoothing at zero inflation in the case of the government's full precommitment to its inflation and default policies. However, in the absence of the government's precommitment to its inflation and debt-repudiation policies, a negative linkage between the average maturity and the level of debt is achieved as a second-best solution.

³Alesina et al. (1990) and Alesina et al. (1992) imply the conclusion of Calvo and Guidotti (1992) and Drudi and Giordano (2000) under different assumptions; the first two studies treat maturity as exogenous but the latter two treat it as endogenous.

relationship between treasury auction maturity and interest rates, indicating a negatively sloped yield curve, specifically for the pre-2001 sample. Based on this finding, we argue that the low credibility of policymakers regarding inflation commitment that is associated with macroeconomic instability and the default risk shortens the maturities with higher interest rates due to the reluctance of creditors to extend funds for the long-term financing of public deficits. Changes in the slope of the estimated yield curve in the post-2001 subsample are also reported in the paper. It is worth noting that the post-2001 period is characterised by lower deficits, lower default risk, successful stabilisation to decrease inflation and higher political stability.

The Turkish economy provides a unique laboratory for studying the return–maturity relationship that could emerge under financial stress. First, the Turkish debt was able to roll over throughout history but there was always a non-zero default risk, as in Alesina et al. (1992). Second, the Turkish economy operated under chronic high and volatile inflation for more than three decades, which resembles the risk on real return as put forth by Calvo and Guidotti (1990a and 1990b) and Missale and Blanchard (1994). Merging these observations with the political instability of successive coalition governments, the ‘lack of confidence’ in economic policymakers can be easily comprehended.⁴ These observations underline the inherent financial stress and macroeconomic stability.

Section II summarises a framework upon which we develop our empirical analysis. Section III presents our modelling approach and the estimates. Section IV discusses the findings and concludes the paper.

II. Theoretical framework

The negative association between maturity and return can be deduced for a utility-maximising agent with tax distortions where the government can issue both short- and long-term bonds and with a non-zero default risk. One may consider a version of Alesina, Prati and Tabellini’s (1990) model, in which a representative individual maximises her lifetime utility and the government minimises its loss function.⁵

The individual derives non-negative utility from her consumption in each period through a regular concave utility function. In every period, she is endowed with one unit of non-storable output and pays a distortionary tax to government, where the size of the distortion is convex in the tax rate. She has access to perfect international capital markets in which she can borrow and lend at a risk-free interest rate equal to her discount factor.

⁴Ertugrul and Selçuk (2001) give a recent history of the Turkish economy.

⁵A detailed presentation of this model is available in the Appendix. One could also use a version of Calvo and Guidotti’s (1992) model to show the negative relationship between maturity and (real) interest rate. This version of the formal model is available from the authors upon request.

There exist short- and long-term debt instruments. Government can repudiate some fraction of its obligations in each period. This fraction is called the default parameter and assumed to be invariant between the short- and long-term debts. The government finances the non-repudiated part of its obligations by means of newly levied taxes and/or newly issued debt. Its loss function includes the financing cost of the existing debt and the cost of tax distortions.

The government does not have any incentive to repudiate if the cost of repudiation is larger than the tax distortions needed for servicing the debt. However, this picture gets complicated when there is a non-zero repudiation risk. In order to illustrate this, suppose that the private expectations about the future fraction of repudiated debt do not depend on the history of the game, and that people expect full repudiation at some future date. Under such circumstances, the government will choose to repay only if the cost of repudiation exceeds the total discounted cost of future tax distortions. The discounted sum of tax distortions is larger in the case of a confidence crisis than in a no-crisis scenario. Hence, if the government's cost of repudiation lies between these two figures, then there exists an equilibrium in which a confidence crisis may occur in the current period or earlier. Eventually, the discounted sum of tax distortions, which is the government's threshold to pay or not to pay its existing obligations, depends on the maturity structure of public debt.

The basic lesson of the Alesina et al. (1990) model is that equilibrium with a confidence crisis is less likely to occur if (i) only long-term debt is issued and (ii) the same amount of debt matures in each period. One may further elaborate their model to show that the maturity of debt negatively affects the yield of bonds. That is, if the maturity shortens, the cost of tax distortions becomes higher and thus the fraction of the repudiated debt increases. This increase, using the no-arbitrage condition, causes the bond price to decrease, which is equivalent to an increase in the real return on the bond. In a nutshell, Alesina et al. suggest that the maturity of the debt negatively affects the yield of bonds. [A]

The default risk premium is also taken into consideration by Alesina et al. If the expected fraction of repudiated debt is non-zero in every period with a known probability, the government has to pay a risk premium on its liability to compensate for the default risk, until a confidence crisis occurs. Lengthening and balancing the maturity structure of government debt can reduce this premium. [B]

Results [A] and [B] together imply a drop in the real yield of bonds as maturity lengthens, and this is empirically assessed in the next section employing the Turkish data.

III. Empirical analysis

Based on Section II, a negative relationship between the return and maturity of public debt is tested empirically in this section of the paper. The evidence reveals a statistically significant and negative relationship between return and maturity, as presented in subsections III.4 and III.5. However, before proceeding with our estimates, we introduce our estimation strategy in order to (i) distinguish the properties of the auction and monthly data-sets that we employ as well as the variable definitions, (ii) divide the whole sample range into subsamples and (iii) show the estimation technique and the form of the specification.

1. Data-sets and variables

Our empirical analysis is based on two types of data covering the period from July 1988 to December 2004.⁶ The first set – *auction data* – is based on the observations for each auction and compiled from data from the Central Bank of the Republic of Turkey and the State Planning Organisation.⁷ The basic variables in this data-set are the nominal interest rate on each auction quoted monthly,⁸ $R^{auction}$, and the maturity of each auction, $M^{auction}$, measured in years.⁹ The real return on each auction is computed by deflating the nominal rate by the seasonally adjusted rate of wholesale price index (WPI, 1987=100) inflation, π , the rate of local currency depreciation, ρ , or the monthly quoted interbank interest rate, i , corresponding to the month in which the auction is held. The rationale for using these three deflators originates from the fact that inflation and currency depreciation affect the intertemporal allocation of resources for

⁶Auction data are available after 1985; however, the availability of the deflating variables that are used in our estimations restricts the start date of the usable data-set to July 1988. Specifically, the interbank market has been operational only since this date. We end the data-set in December 2004, but especially focus on the data prior to June 2001, which corresponds to the date of a high-volume swap of treasury bonds with the public institutions and the public sector banks. This swap was aimed at handling the operational losses of various banks that were taken over by the Savings Deposits Insurance Fund (SDIF) following the February 2001 financial crisis. Afterwards, the denomination of the debt changed and the maturity was lengthened. Since the default, exchange rate and inflation risk compositions of the government debt changed considerably after that, the main focus of the study is on the pre-June-2001 episode.

⁷In this paper, we only include the treasury auctions in Turkish-lira-denominated bills and bonds and exclude foreign-exchange-denominated and inflation-indexed bills and bonds. The reason for this exclusion is that neither foreign-exchange-denominated nor inflation-indexed assets were traded in secondary markets regularly (thus these bills and bonds had high liquidity premiums) and the Treasury was often reluctant to issue these bills and bonds due to their exchange-rate or inflation risks for a significant portion of our sample span.

⁸The monthly equivalent of the auction (simple) interest rate is computed by dividing the per-annum figure by 12. The official convention for reporting auction interest rates is to report the simple, rather than compound, figures. We follow the same convention in this study as well.

⁹Following Grabbe (1996), we took one year to be 360 calendar days.

domestic agents and the real return on domestic bonds for foreign investors. Similarly, the interbank interest rate is taken as a benchmark by domestic investors when they bid for treasury auctions. The rate of depreciation is computed as the percentage change in the Turkish lira value of a currency basket that is composed of 1 US dollar and 0.77 euro (prior to the circulation of euro, 1 US dollar and 1.5 Deutsche mark), which is the official exchange-rate basket that the Central Bank of the Republic of Turkey follows for its operations.

The deflated (real) auction interest rates that are used in this paper are as follows. The real interest rate, r_{auction}^{π} , is defined as $(R^{\text{auction}} - \pi)/(1 + \pi)$. $r_{\text{auction}}^{\pi_{-1}}$ is defined as $(R^{\text{auction}} - \pi_{-1})/(1 + \pi_{-1})$ where π_{-1} is the previous month's rate of inflation, and it is used as an instrumental variable. When ρ and i , instead of π , are used to obtain the real interest-rate measures,¹⁰ the resulting real interest rates are denoted as $r_{\text{auction}}^{\rho}$ and r_{auction}^i respectively. We have also defined $r_{\text{auction}}^{\rho_{-1}}$ and $r_{\text{auction}}^{i_{-1}}$ for $r_{\text{auction}}^{\pi_{-1}}$, where the first two are the notational convention for the last one, but the depreciation and interbank rate were used rather than inflation.

The auction data-set does not have a regular periodicity; therefore, inferences from the auction data might be subject to criticisms such as (i) the auction-based data-set that we employ is not adequately balanced (for example, there are some months with no treasury auctions), (ii) the frequency of auctions in different months is not necessarily the same¹¹ and (iii) the volume of borrowing is not the same for every single auction. In order to handle these potential criticisms, we estimate the interest-rate–maturity relationship by using *monthly data*. The nominal interest rate quoted monthly and the monthly average maturity are denoted by R_t and M_t respectively. Explicitly, R_t is the monthly interest rate on treasury auctions, calculated for each month as a weighted average of the interest rates of the treasury auctions held in that particular month, where the weights are chosen

¹⁰The reader will realise that our choice of deflators, when obtaining the real interest-rate measures, stems from three important economic constructs, such that the choices of the seasonally adjusted rate of WPI inflation, the rate of currency depreciation and the interbank overnight interest rate are linked with the *Fisher equation*, the *uncovered interest rate parity* condition and a more general *financing* condition respectively. The Fisher equation relates nominal interest rates to the inflation rate. In its strong form, there is a one-for-one relationship between these rates; thus the real interest rate is constant. The uncovered interest rate parity condition suggests that the interest-rate difference between domestic and foreign countries is a function of depreciation. One may assume that the domestic interest rate is determined by depreciation if the domestic interest rates are considerably higher and more volatile than foreign interest rates. Lastly, the financing condition dictates the long-term rates as a function of short-term rates due to the Expectation Theory of the Term Structure of Interest Rates.

¹¹Owing to this imbalance, rate of inflation, rate of currency depreciation and interbank interest rates may be overemphasised for months with more treasury auctions and simply be ignored for months with no treasury auctions.

as the volume of borrowing in each auction. Similarly, the maturity figures are obtained as averages from the original auction data. For the other variables, such as the rate of seasonally adjusted WPI inflation and the rate of currency depreciation, the usual conventions are followed. The interbank interest rate figures are taken from the Central Bank of the Republic of Turkey, quoted annually. In addition, π_t , ρ_t and i_t are the monthly counterparts of π , ρ and i of the auction data-set. Then our real-return measures in the monthly data-set are r_t^π , r_t^ρ and r_t^i , standing for the monthly nominal interest rate deflated by the monthly rate of inflation, the monthly rate of currency depreciation and the monthly quoted interbank interest rate respectively. In the case of r_t^π , the formula $(R_t - \pi_t)/(1 + \pi_t)$ is used to deflate the nominal interest rate. For r_t^ρ and r_t^i , the depreciation rate and the interbank interest rate are employed as deflators, instead of the monthly inflation rate. M_t is the maturity measured in years.

2. Choice of sample periods and descriptive statistics of data

The whole sample of our analysis covers the period from July 1988 to December 2004. However, the Turkish economy experienced two severe financial crises within this period, which may alter the quality of empirical analysis. This makes us re-generate our estimates for some subsamples to ensure stability. Indeed, we have performed the Chow breakpoint tests in order to assess the robustness of our specifications between these crises. These tests give support to the segmentation of the sample span as presented in this subsection.

The first big crisis in recent Turkish economic history – namely, the 1994 crisis – started in January 1994 and led to the announcement of a new stabilisation programme in April 1994, and its devastating effects did not disappear until 1995. The second crisis, which was even more devastating, occurred in February 2001. However, the vulnerability of the Turkish economy had increased considerably before that – namely, in November 2000 after the financial collapse of a medium-sized commercial bank.¹² In May 2001, the 2001 macroeconomic stabilisation programme, which was also supported by the International Monetary Fund (IMF), was introduced.

Given the availability of data and the crisis experience of the Turkish economy, we have designated our subsamples as [1] July 1988 to May 2001, [2] January 1995 to October 2000 and [3] June 2001 to December 2004. The episode from July 1988 to May 2001 runs from the beginning of our data to the start of the 2001 macroeconomic stabilisation programme. However, it

¹²The management of that bank was taken over by the Savings Deposits Insurance Fund (SDIF). Although there had been other takeovers before November 2000, they did not create a severe impact.

includes both the 1994 and the 2001 financial crises; therefore it is likely that the estimated econometric relationship is subject to change within the episode. The January 1995 to October 2000 period allows us to avoid the effects of the above-mentioned crises on our estimates. The third subsample covers the part of the data-set from June 2001; thus it includes no crisis effects and reflects the developments in the last three years, which helped reduce financial stress and enhance macroeconomic stability (Central Bank of the Republic of Turkey, 2004 and 2005).

In sum, the first subsample corresponds to a period dominated by financial stress and crises; the second subsample can be marked as a between-crises period that is still subject to high financial stress; and the last subsample is characterised by successful stabilisation efforts.

Table 1 (auction data) and Table 2 (monthly data) report the descriptive statistics of the data for the whole and the subsample periods. Sample means and the standard deviations suggest that the level and variability of the interest rates (the auction as well as its deflated measures) have almost always been high for our samples, especially for the whole sample and subsample [1].

Among descriptive statistics, Jarque–Bera (1987) test statistics might deserve special attention. Tables 1 and 2 suggest that the majority of the variables display normal distributions in subsamples [2] and [3], but not in the whole sample or in subsample [1]. Indeed, excess kurtosis (i.e. kurtosis above a value of 3) is observed for most of our series in the whole sample and in subsample [1]. For these sample ranges, we can hardly talk about the normality of our data. However, in subsamples [2] and [3], the data-set displays normality with only minor exceptions.

Non-normality of some of the variables is also reported in earlier empirical evidence on Turkey. For example, Berument and Gunay (2003) report the ARCH effect¹³ in the exchange rate and Berument and Malatyali (2001) report the ARCH effect in inflation. Aydin (2004) studies the variants of ARCH models on interest rates and suggests the existence of significant ARCH effects. Since we employ these variables in our study, ARCH effects are expected in our deflated measures of the real return, simply ruling out the normality of series. However, the incorporation of ARCH effects into our investigation of the yield curve is left for further studies.

¹³ARCH stands for AutoRegressive Conditional Heteroscedasticity and measures the volatility and risks in terms of the dynamics of the conditional variance of returns over time. Failing to reject the existence of ARCH effects within a series is an indication of heteroscedasticity in that series.

TABLE 1
Descriptive statistics: auction data

	r_{auction}^{π}	$r_{\text{auction}}^{\rho}$	r_{auction}^i	R	π	ρ	i	M^{auction}
<i>Whole sample: Jul 1988–Dec 2004 auctions</i>								
Mean	0.0221	0.0291	0.0069	0.0612	0.0385	0.0326	0.0546	0.6591
Median	0.0198	0.0268	0.0082	0.0590	0.0364	0.0336	0.0519	0.5056
Max.	0.1179	0.2345	0.1141	0.1872	0.2677	0.4445	0.3633	3.0417
Min.	-0.1389	-0.2443	-0.2316	0.0090	-0.0061	-0.0726	0.0159	0.0778
Std dev.	0.0231	0.0420	0.0262	0.0249	0.0235	0.0436	0.0365	0.4528
Skewness	-0.1267	0.0205	-3.0976	0.7225	2.6758	2.5376	4.5024	1.9923
Kurtosis	8.5905	10.5504	26.1054	4.1541	24.8341	24.3739	29.0538	9.4267
Jarque–Bera ^a	1075.26 (0.00)	1957.37 (0.00)	19646.84 (0.00)	117.43 (0.00)	17350.87 (0.00)	16569.33 (0.00)	26089.46 (0.00)	1963.18 (0.00)
n	824	824	824	824	824	824	824	824
<i>Subsample [1]: Jul 1988–May 2001 auctions</i>								
Mean	0.0227	0.0282	0.0070	0.0672	0.0438	0.0392	0.0606	0.6538
Median	0.0205	0.0255	0.0088	0.0636	0.0406	0.0362	0.0550	0.5056
Max.	0.1179	0.2345	0.1141	0.1872	0.2677	0.4445	0.3633	3.0417
Min.	-0.1389	-0.2443	-0.2316	0.0235	-0.0003	-0.0726	0.0180	0.0778
Std dev.	0.0248	0.0403	0.0294	0.0237	0.0225	0.0401	0.0389	0.4597
Skewness	-0.1857	0.0865	-2.8006	0.8463	3.6490	4.1172	4.4317	2.1971
Kurtosis	8.1853	14.6793	20.9505	4.3611	33.3336	39.3684	26.2100	10.6743
Jarque–Bera ^a	721.81 (0.00)	3643.96 (0.00)	9443.88 (0.00)	125.99 (0.00)	25997.59 (0.00)	37137.01 (0.00)	16486.12 (0.00)	2088.68 (0.00)
n	641	641	641	641	641	641	641	641
<i>Subsample [2]: Jan 1995–Oct 2000 auctions</i>								
Mean	0.0340	0.0362	0.0177	0.0765	0.0412	0.0390	0.0578	0.7580
Median	0.0329	0.0355	0.0167	0.0805	0.0418	0.0403	0.0613	0.5833
Max.	0.1094	0.0869	0.0563	0.1257	0.0700	0.0836	0.0886	3.0333
Min.	-0.0012	-0.0038	-0.0082	0.0235	0.0088	0.0046	0.0216	0.1389
Std dev.	0.0196	0.0173	0.0130	0.0219	0.0140	0.0158	0.0128	0.5390
Skewness	0.5746	0.2210	0.2716	-0.7831	0.0375	0.0980	-0.7804	2.0333
Kurtosis	3.6040	2.6455	2.6704	3.3856	2.3604	3.0581	3.8208	8.2226
Jarque–Bera ^a	15.24 (0.00)	2.90 (0.23)	3.65 (0.16)	23.52 (0.00)	3.75 (0.15)	0.38 (0.83)	28.12 (0.00)	396.13 (0.00)
n	217	217	217	217	217	217	217	217
<i>Subsample [3]: Jun 2001–Dec 2004 auctions</i>								
Mean	0.0197	0.0324	0.0066	0.0402	0.0202	0.0095	0.0334	0.6774
Median	0.0176	0.0406	0.0053	0.0429	0.0157	-0.0048	0.0367	0.5444
Max.	0.0617	0.1295	0.0253	0.0735	0.0594	0.1094	0.0543	2.0222
Min.	-0.0476	-0.0748	-0.0382	0.0090	-0.0061	-0.0600	0.0159	0.2333
Std dev.	0.0159	0.0474	0.0067	0.0160	0.0166	0.0473	0.0120	0.4283
Skewness	0.0647	-0.1809	-0.8938	-0.0246	0.6705	0.6579	-0.0005	1.1141
Kurtosis	4.3100	2.4225	12.7847	1.6394	2.7198	2.3802	1.6705	3.7157
Jarque–Bera ^a	13.21 (0.00)	3.54 (0.17)	754.38 (0.00)	14.13 (0.00)	14.31 (0.00)	16.13 (0.00)	13.48 (0.00)	41.76 (0.00)
n	183	183	183	183	183	183	183	183

^ap-values of Jarque–Bera tests are reported in parentheses.

TABLE 2
Descriptive statistics: monthly data

	r_t^π	r_t^ρ	r_t^i	R_t	π_t	ρ_t	i_t	M_t
<i>Whole sample: Jul 1988–Dec 2004</i>								
Mean	0.0226	0.0267	0.0072	0.0616	0.0384	0.0355	0.0548	0.7359
Median	0.0224	0.0287	0.0089	0.0606	0.0361	0.0344	0.0524	0.6962
Max.	0.0899	0.2036	0.0862	0.1350	0.2677	0.4445	0.3633	2.0278
Min.	-0.1284	-0.2350	-0.2200	0.0190	-0.0061	-0.0726	0.0159	0.1231
Std dev.	0.0226	0.0395	0.0273	0.0240	0.0257	0.0486	0.0377	0.3432
Skewness	-1.2090	-1.3670	-4.3322	0.3030	3.8165	3.6935	5.0230	1.5286
Kurtosis	12.3294	15.2388	32.5747	2.7104	34.1263	30.2616	35.2518	6.3812
Jarque–Bera ^a	766.28 (0.00)	1297.42 (0.00)	7835.34 (0.00)	3.72 (0.16)	8473.65 (0.00)	6581.56 (0.00)	9414.09 (0.00)	171.42 (0.00)
<i>n</i>	198	198	198	198	198	198	198	198
<i>Subsample [1]: Jul 1988–May 2001</i>								
Mean	0.0236	0.0253	0.0074	0.0676	0.0434	0.0428	0.0608	0.7438
Median	0.0236	0.0277	0.0111	0.0675	0.0402	0.0382	0.0556	0.6825
Max.	0.0899	0.2036	0.0862	0.1350	0.2677	0.4445	0.3633	2.0278
Min.	-0.1284	-0.2350	-0.2200	0.0275	-0.0003	-0.0726	0.0180	0.1231
Std dev.	0.0244	0.0379	0.0308	0.0225	0.0255	0.0468	0.0401	0.3704
Skewness	-1.3197	-1.9733	-3.8953	0.2918	4.7055	5.1445	4.9608	1.5150
Kurtosis	11.6317	21.3916	25.9691	2.6793	40.6611	40.9216	31.9715	5.8162
Jarque–Bera ^a	526.18 (0.00)	2285.13 (0.00)	3799.26 (0.00)	2.86 (0.24)	9732.23 (0.00)	9971.11 (0.00)	6056.53 (0.00)	110.52 (0.00)
<i>n</i>	155	155	155	155	155	155	155	155
<i>Subsample [2]: Jan 1995–Oct 2000</i>								
Mean	0.0337	0.0361	0.0183	0.0765	0.0415	0.0390	0.0571	0.8855
Median	0.0344	0.0368	0.0189	0.0813	0.0410	0.0419	0.0601	0.8000
Max.	0.0770	0.0680	0.0495	0.1142	0.0700	0.0836	0.0886	2.0278
Min.	-0.0214	-0.0048	-0.0118	0.0275	0.0088	0.0046	0.0216	0.2389
Std dev.	0.0193	0.0166	0.0130	0.0222	0.0142	0.0154	0.0125	0.4699
Skewness	-0.0452	-0.2376	-0.1293	-0.9708	0.0524	-0.0623	-0.8550	0.9282
Kurtosis	3.1938	2.7354	2.6869	3.1986	2.3450	3.0480	3.8824	3.1416
Jarque–Bera ^a	0.13 (0.94)	0.86 (0.65)	0.48 (0.79)	11.11 (0.00)	1.28 (0.53)	0.05 (0.97)	10.80 (0.00)	10.11 (0.01)
<i>n</i>	70	70	70	70	70	70	70	70
<i>Subsample [3]: Jun 2001–Dec 2004</i>								
Mean	0.0191	0.0321	0.0064	0.0399	0.0205	0.0094	0.0333	0.7074
Median	0.0175	0.0404	0.0056	0.0441	0.0157	-0.0048	0.0367	0.7222
Max.	0.0544	0.1215	0.0196	0.0642	0.0594	0.1094	0.0543	1.2028
Min.	-0.0133	-0.0730	-0.0004	0.0190	-0.0061	-0.0600	0.0159	0.3306
Std dev.	0.0137	0.0449	0.0049	0.0155	0.0170	0.0463	0.0124	0.2200
Skewness	0.3544	-0.1168	1.0167	-0.1221	0.5987	0.6608	0.0489	-0.0006
Kurtosis	3.2694	2.4639	3.6303	1.4426	2.5470	2.4093	1.6387	2.2213
Jarque–Bera ^a	1.03 (0.60)	0.61 (0.74)	8.12 (0.02)	4.45 (0.11)	2.94 (0.23)	3.75 (0.15)	3.34 (0.19)	1.09 (0.58)
<i>n</i>	43	43	43	43	43	43	43	43

^ap-values of Jarque–Bera tests are reported in parentheses.

FIGURE 1

Evolution of the series: auction data

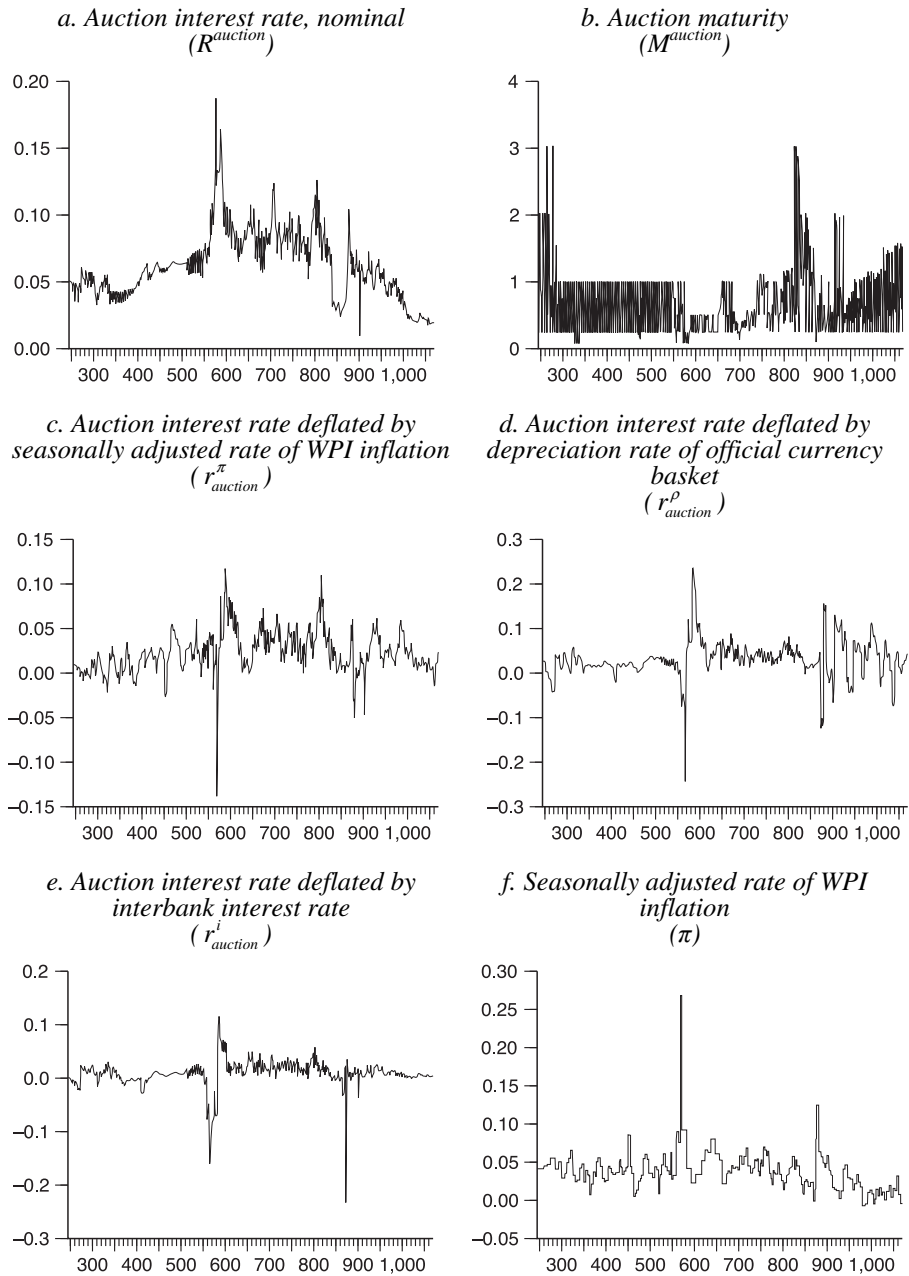
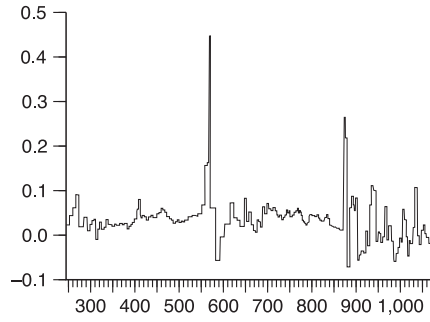


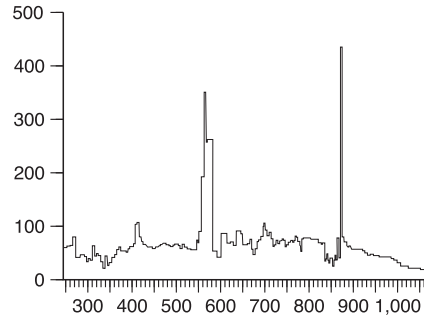
Figure 1 continues on next page

FIGURE 1 continued

g. Depreciation rate of official currency basket (ρ)



h. Interbank interest rate (i)

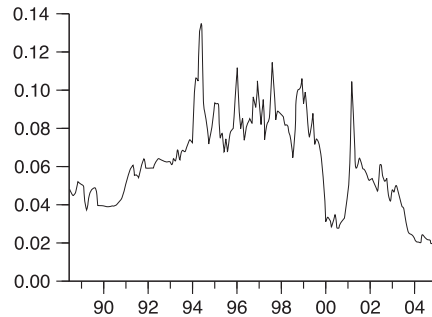


Notes: In all panels, the horizontal axis shows the observation numbers. Maturity is measured in 360-day years and other variables are displayed in decimals.

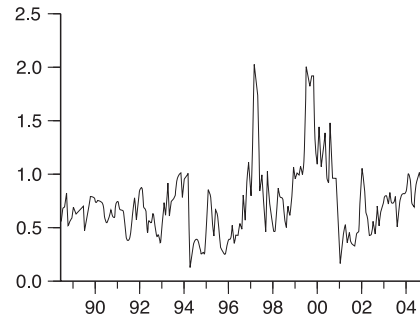
FIGURE 2

Evolution of the series: monthly data

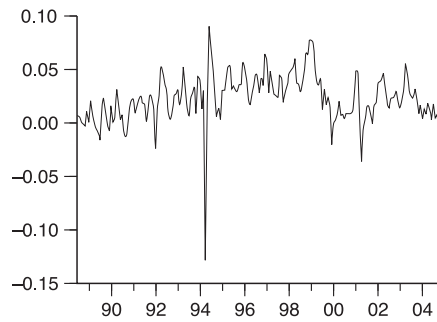
a. Nominal weighted average auction interest rate (R_t)



b. Average auction maturity (M_t)



c. Interest rate deflated by seasonally adjusted rate of WPI inflation (r_t^π)



d. Interest rate deflated by depreciation rate of official currency basket (r_t^ρ)

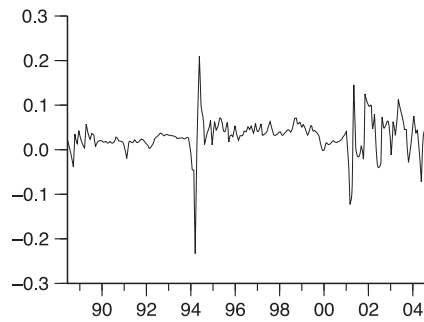
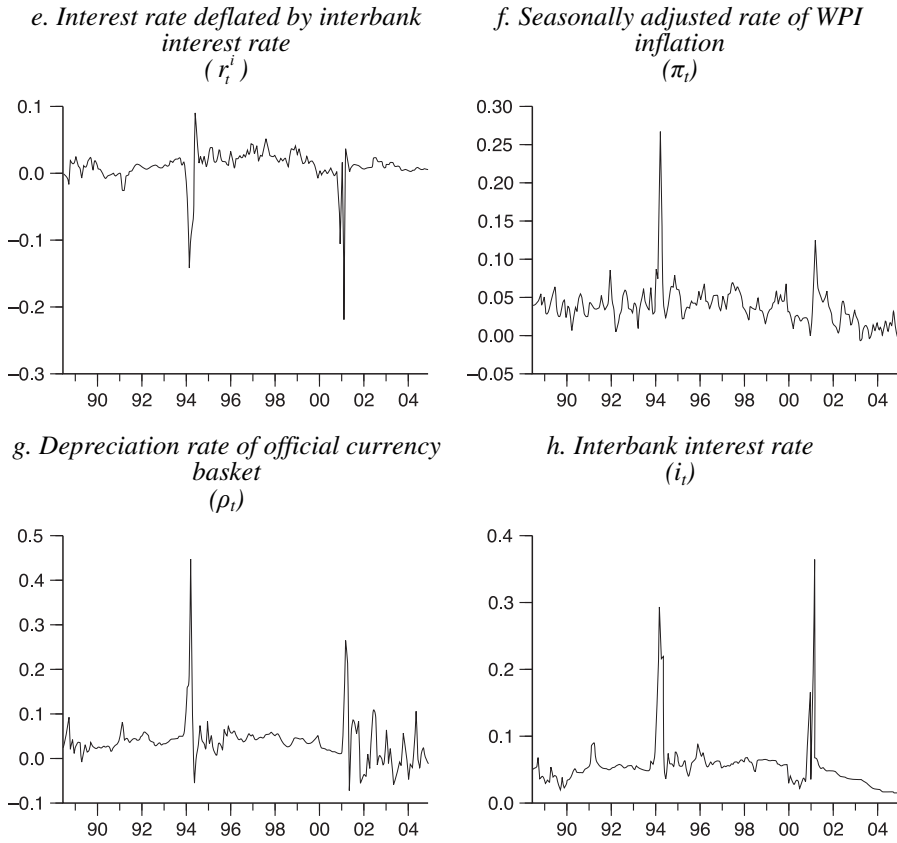


FIGURE 2 continued



Notes: In all panels, the horizontal axis shows time periods (months). Maturity is measured in 360-day years and other variables are displayed in decimals.

FIGURE 3

Evolution of the first differences of the series: auction data

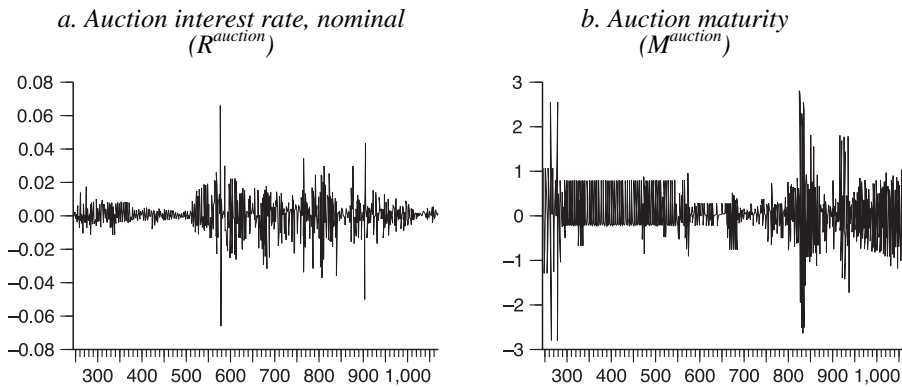
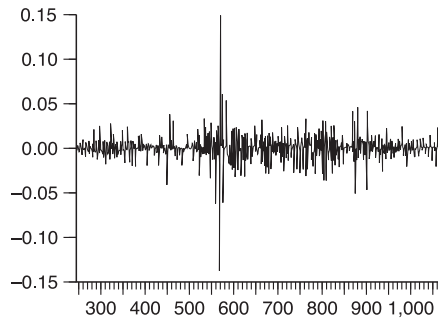
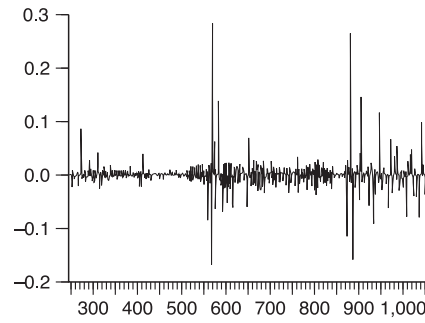


FIGURE 3 continued

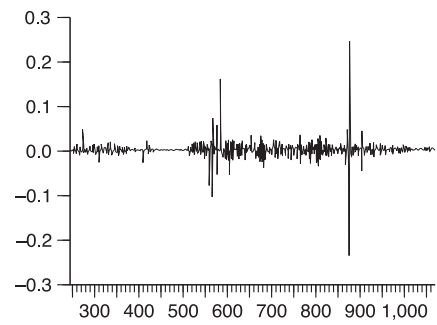
c. Auction interest rate deflated by
seasonally adjusted rate of WPI inflation
(r_{auction}^{π})



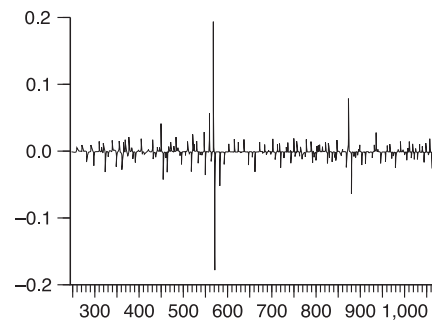
d. Auction interest rate deflated by
depreciation rate of official currency
basket
($r_{\text{auction}}^{\rho}$)



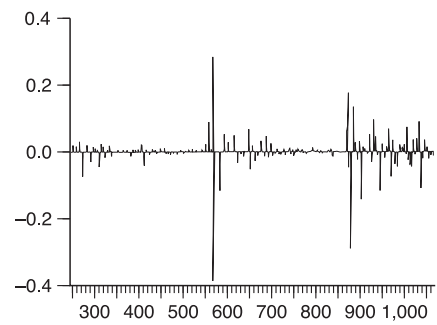
e. Auction interest rate deflated by
interbank interest rate
(r_{auction}^i)



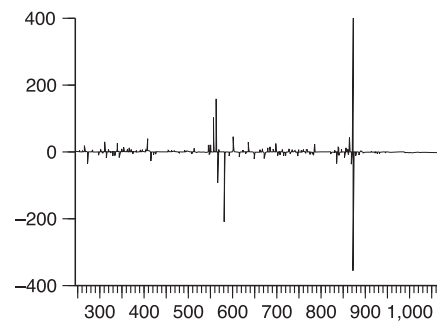
f. Seasonally adjusted rate of WPI
inflation
(π)



g. Depreciation rate of official currency
basket
(ρ)



h. Interbank interest rate
(i)

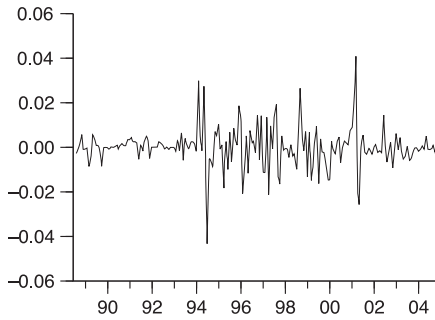


Notes: In all panels, the horizontal axis shows the observation numbers. Maturity is measured in 360-day years and other variables are displayed in decimals.

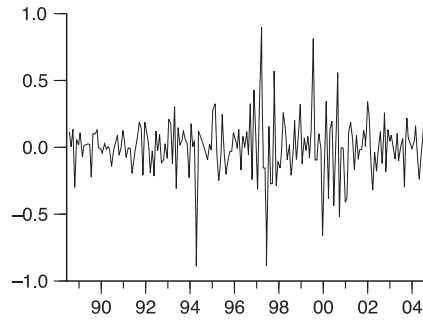
FIGURE 4

Evolution of the first differences of the series: monthly data

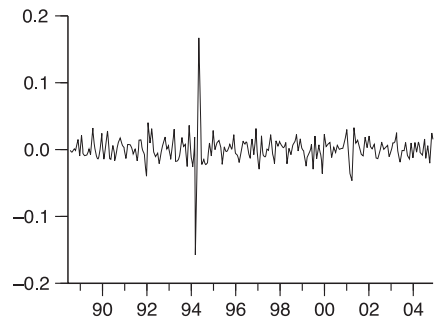
a. Nominal weighted average auction interest rate (R_t)



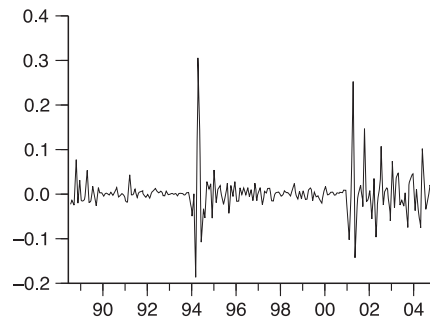
b. Average auction maturity (M_t)



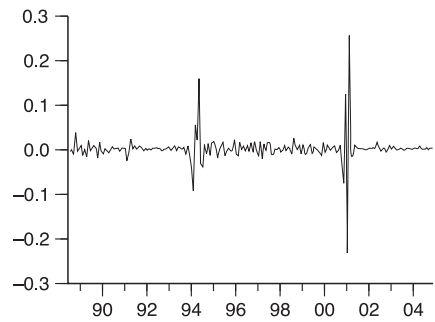
c. Interest rate deflated by seasonally adjusted rate of WPI inflation (r_t^π)



d. Interest rate deflated by depreciation rate of official currency basket (r_t^p)



e. Interest rate deflated by interbank interest rate (r_t^i)



f. Seasonally adjusted rate of WPI inflation (π_t)

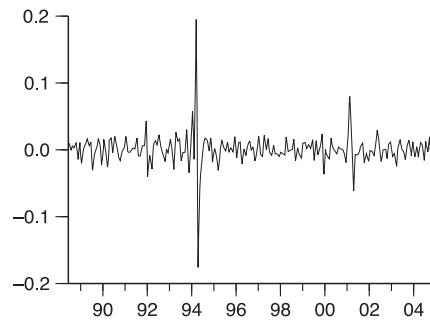
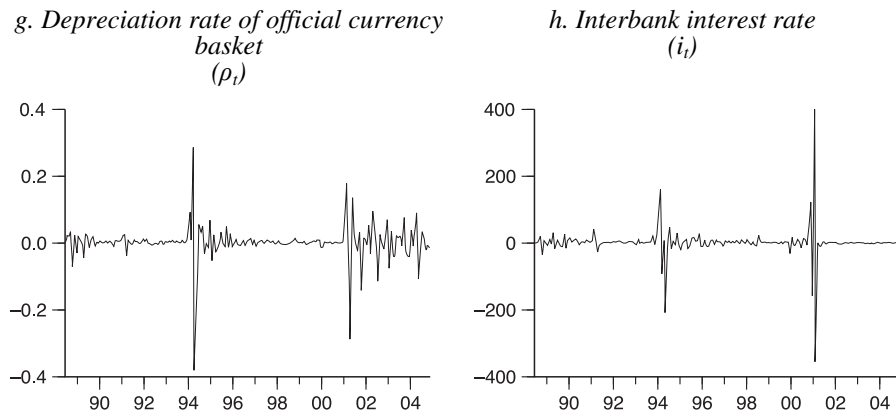


Figure 4 continues on next page

FIGURE 4 continued



Notes: In all panels, the horizontal axis shows time periods (months). Maturity is measured in 360-day years and other variables are displayed in decimals.

The levels of the data series and their differences are plotted in Figures 1 and 2 and Figures 3 and 4 respectively. Figures 1 and 2 clearly reflect the trends in the data series and display the effects of the financial crises on our variables. It can be noted that none of the series demonstrates explosive behaviour. Figures 3 and 4 also demonstrate the time-changing variability of the series.

3. Estimation technique and form of estimating equation

A problem of simultaneity is inherent in the data due to the very nature of the treasury auction process, which determines the maturities and interest rates simultaneously. Under these circumstances, the ordinary least squares (OLS) estimates will be biased. The instrumental variable (or two-stage regression) (IV) technique was used to account for this problem in obtaining our parameter estimates.

The first equation form that we investigate is given in equation 1:

$$(1) \quad \text{Real Return} = \alpha_0 + \alpha_1 \text{Maturity} + \varepsilon$$

where *Real Return*, which is $(\text{Nominal Return} - X)/(1+X)$, is obtained as described in subsection III.1 and *Maturity* is measured in years. *X* is a deflating variable, such as the rate of inflation, the depreciation rate of the local currency or the interbank interest rate. This form simply helps us to obtain the relationship between real interest rates and maturity.

On the other hand, it is probable that deflating variables, such as rate of inflation, rate of currency depreciation and interbank interest rate, do not affect the real returns in a one-for-one manner, i.e. as in the numerator of the

Real Return expression in equation 1. Therefore we have also employed a second equation form, in which the deflating variables might have coefficients other than unity. This relaxation is expressed by means of equation 2:

$$(2) \quad \textit{Nominal Return} = \alpha_0 + \alpha_1 \textit{Maturity} + \alpha_2 X + \varepsilon$$

where *Nominal Return* is the nominal interest rate. Equations 1 and 2 are the generic equations that assess the basis for our analysis in the following subsections, where the latter is motivated by Tobin (1965). This suggests that nominal interest rates increase less than the amount by which inflation increases, under the assumption that money and capital are the only forms of wealth and the economy has a decreasing-returns-to-scale production function. Under these circumstances, if the opportunity cost of holding money increases due to higher inflation, then money holdings decrease and capital stock increases. The assumption of decreasing returns to scale causes the interest rate to increase less than inflation; therefore α_2 becomes less than unity. Regarding how α_2 can be less than unity in the case of X being the interbank interest rate, one might see Cook and Hahn (1989) and Berument and Froyen (2005) for empirical support. Finally, in the case of local currency depreciation, the deflating effect of depreciation can be disproportionate due to the dynamic effects of risk premiums (see Central Bank of the Republic of Turkey (2003)).

When estimating equations 1 and 2 for different subsamples, the reliability of the estimates is a key consideration. Although the IV technique grants that the estimated coefficients are unbiased, the significance of the estimates may be mismeasured if we do not use robust standard errors. In order to avoid such a shortfall, we have employed the Newey–West procedure for non-spherical robust disturbances.

In the next subsection, we present our analysis based on auction data and equation 1. Subsection III.5 presents our results on monthly data under equations 1 and 2.

4. Estimates based on auction data

Estimated coefficients based on the auction data for the return–maturity relationship are reported in Table 3. In the first column, our dependent variable is r_{auction}^{π} , which is regressed on a constant term and bond maturity. The instrumental variables are the constant term, the first three lags of $r_{\text{auction}}^{\pi-1}$ and the lag of M^{auction} . In the second and third columns, $r_{\text{auction}}^{\rho}$ and r_{auction}^i are used as the left-hand-side variables. When the nominal interest rates are

TABLE 3
Real interest-rate–maturity relationships: auction data

Independent variables	r_{auction}^x	r_{auction}^p	r_{auction}^i
<i>Whole sample: Jul 1988–Dec 2004 auctions</i>			
Constant	0.138*** (2.805)	0.159*** (2.203)	0.021*** (3.747)
M^{auction}	-0.176*** (-2.354)	-0.197* (-1.811)	-0.021*** (-2.549)
<i>Subsample [1]: Jul 1988–May 2001 auctions</i>			
Constant	0.096*** (4.375)	0.137*** (3.602)	0.020*** (3.508)
M^{auction}	-0.112*** (-3.349)	-0.166*** (-2.895)	-0.020*** (-2.403)
<i>Subsample [2]: Jan 1995–Oct 2000 auctions</i>			
Constant	0.093*** (7.359)	0.072 (8.337)	0.029 (9.634)
M^{auction}	-0.078*** (-4.564)	-0.047*** (-4.380)	-0.016*** (-3.896)
<i>Subsample [3]: Jun 2001–Dec 2004 auctions</i>			
Constant	0.006 (0.661)	0.002 (0.110)	0.012*** (5.098)
M^{auction}	0.021 (1.622)	0.044 (1.509)	-0.009*** (-2.544)

Note: t-statistics are reported in parentheses under the corresponding estimated parameters, where the underlying standard errors are (White's) heteroscedasticity-consistent standard errors. *, ** and *** correspond to statistical significance at the 10 per cent, 5 per cent and 1 per cent levels respectively.

deflated with the depreciation rate or the interbank rate, the instrument sets are modified accordingly. That is, r_{auction}^{p-1} and r_{auction}^{i-1} are used as instruments when r_{auction}^p and r_{auction}^i are used as the dependent variables.

Table 3 suggests – for the whole sample – that there is a statistically significant¹⁴ and negative relationship between real interest rates on auctions and the maturities of newly issued debt, as we hypothesised before. Moreover, the largest coefficient in absolute value is observed when the interest rate is deflated with the depreciation rate. The same observation is valid for subsample [1] – namely, for auctions between July 1988 and May 2001 inclusive. When the focus is shifted to the between-crisis episode (subsample [2]), maturity remains statistically significant with a negative sign. Furthermore, it possesses the largest absolute coefficient when the nominal interest rate is deflated by the rate of inflation.

The post-May-2001 subsample displays a different overall picture of the yield curve. When the nominal interest rate is deflated by the inflation rate or rate of currency depreciation, the slope of the estimated yield curve turns

¹⁴The level of significance is 5 per cent unless otherwise mentioned.

out to be positive, although these estimates of the slope are not statistically significant at the 10 per cent level. This is possibly due to the change in the exchange-rate regime. Although the exchange rate was a useful indicator of expected inflation before the 2001 financial crisis, it is not so after February 2001, when the exchange rate was allowed to float freely.

It is worth noting that the slope of the yield curve remains negative and statistically significant for the post-May-2001 subsample when we compute the real auction return in excess of the interbank interest rate. This possibly reflects the change in people's perception of the economic dynamics after May 2001.

The above-mentioned change from pre-June-2001 to post-May-2001 episode is worth further elaboration. In the absence of a confidence crisis, an upward-sloping yield curve is associated with expectations of 'increasing inflation', i.e. investors require higher nominal returns if they believe that the future course of inflation will trend upwards. However, the presence of a confidence crisis (for example, low confidence) reverses this picture, as elaborated in Section II. That is, there is no period before 2001 during which inflation continuously falls, and this should normally imply an upward-sloping yield curve. However, the risk profile of the Turkish-lira-denominated domestic debt causes the slope to be downwards, rather than upwards, in the pre-June-2001 episode.

In the post-May-2001 episode, both actual consumer price inflation and inflation expectations have been steadily falling. This is clearly a textbook case of a downward-sloping yield curve. Our empirical estimates, however, reveal the opposite, probably indicating the continuation of the high risk profile of the Treasury.

5. Estimates based on monthly data

Our auction-based estimates depict a negative linkage between the interest rate of government auctions and auction maturity, confirming our theoretical finding in Section II for the pre-June-2001 period. This subsection provides evidence from the monthly data. Due to the lack of treasury auctions in December 1999 and December 2000, there are two missing values in the maturity series. The State Planning Organisation provided observations for those months by substituting information on the Treasury's sale of bonds to public institutions. This anomaly of data is handled by defining intercept dummy variables for each of the two months. These dummy variables are included in both the functional specification and the set of instrumental variables, so as to control for the effect of missing observations.

TABLE 4
Real interest-rate–maturity relationships: monthly data

<i>Independent variables</i>	r_t^π	r_t^ρ	r_t^i
<i>Whole sample: Jul 1988–Dec 2004</i>			
Constant	0.069*** (3.220)	0.087* (1.773)	0.028*** (2.271)
M_t	-0.063*** (-2.242)	-0.082 (-1.265)	-0.0289* (-1.737)
$D9912$	0.031 (0.949)	0.067 (0.873)	0.014 (0.757)
$D0012$	0.012* (1.905)	0.022 (1.637)	-0.109*** (-27.964)
<i>Subsample [1]: Jul 1988–May 2001</i>			
Constant	0.071*** (3.668)	0.092* (1.830)	0.010 (0.543)
M_t	-0.065*** (-2.475)	-0.091 (-1.367)	-0.002 (-0.102)
$D9912$	0.031 (1.009)	0.077 (0.999)	-0.017 (-0.653)
$D0012$	0.011* (1.663)	0.026* (1.834)	-0.115*** (-25.646)
<i>Subsample [2]: Jan 1995–Oct 2000</i>			
Constant	0.088*** (5.818)	0.067*** (5.729)	0.027*** (7.621)
M_t	-0.061*** (-3.822)	-0.035*** (-2.805)	-0.010*** (-2.368)
$D9912$	0.008 (0.505)	-0.004 (-0.339)	-0.019*** (-3.837)
<i>Subsample [3]: Jun 2001–Dec 2004</i>			
Constant	0.016*** (2.273)	-0.007 (-0.263)	0.014*** (6.041)
M_t	0.004 (0.352)	0.055 (1.601)	-0.011*** (-3.976)

Notes: t-statistics are reported in parentheses under the corresponding estimated parameters, where the underlying standard errors are (White's) heteroscedasticity-consistent standard errors. *, ** and *** correspond to statistical significance at the 10 per cent, 5 per cent and 1 per cent levels respectively. $D0012$ is not usable in subsample [2], and neither $D9912$ nor $D0012$ is usable in subsample [3], to avoid singularity.

In our first series of regressions, we use r_t^π , r_t^ρ and r_t^i as the left-hand-side variables. The regressors are the constant term, maturity M_t and the dummy variables for December 1999 ($D9912$) and December 2000 ($D0012$). We use the constant term, the two dummy variables and one to four lags of i_t , π_t and ρ_t as our instrumental variables. The estimates in Table 4 suggest – for the whole sample – a negative relationship between real bond return and maturity, supporting our previous findings in the auction-based regressions.

When the nominal interest rate is deflated with the inflation rate, the slope estimate of the yield curve is significant at 1 per cent; when it is deflated by the interbank interest rate, the significance is at the 10 per cent level. Although the yield curve has a negative slope for r_t^p , this estimate is insignificant. Table 4 further replicates these estimations for our three subsamples. In subsample [1], we observe a significantly negative slope estimate in the first column only. The real interest rate computed using the depreciation rate or the interbank interest rate does not have a statistically significant association with maturity in subsample [1].

Estimates for subsample [2] suggest a negatively sloped yield curve, regardless of the deflating variable. All these estimates are statistically significant at the 1 per cent level. The insignificance disappears when the crises are excluded from subsample [1]. This is mainly due to the fact that during the crisis episodes, the series under consideration display erratic behaviour and act as outliers.

The last panel of Table 4 closely mimics that of Table 3, i.e. the estimated yield curves attain positive but insignificant slopes when inflation or depreciation rates are used as deflators in subsample [3], while the case of the interbank interest rate still suggests a negatively sloped yield curve after May 2001.

One may be sceptical of the regressions presented in Table 4 since a coefficient of unity is imposed on the deflating variable in each of the regressions. Following Tobin (1965), Cook and Hahn (1989) and inflation-risk-premium arguments that a change in the deflating variables may not be reflected in the nominal interest rate on a one-for-one basis,¹⁵ we estimate another set of regressions in which the monthly nominal interest rate, R_t , is regressed on the constant term, M_t , $D9912$, $D0012$ and either π_t , ρ_t or i_t , and where the set of instrumental variables consists of the constant term, the two dummy variables and one to three lags of π_t , ρ_t and i_t . Our IV estimates of these specifications are reported in Table 5, which suggests the previously observed negative relationship between interest rates and maturity variables with tighter levels of significance.¹⁶ However, there are some changes in the pattern of slope estimates across subsamples and across deflating variables. For instance, the whole sample suggests significantly negative estimates in all three specifications. In contrast to what we have observed in Table 4, in Table 5 these significant and negative estimates are maintained in subsample [1]. Moreover, subsamples [2] and [3] also suggest negatively sloped yield curves for all specifications except for the third in subsample [2]. In sum, the overall picture suggests a negatively sloping yield curve.

¹⁵See Berument and Malatyali (2001) for elaboration on this for Turkey.

¹⁶The same estimation could not be performed for the specifications in the previous subsection due to the structure of the auction data-set.

TABLE 5
Nominal interest-rate–maturity relationships: monthly data

Independent variables	R_t	R_t	R_t
<i>Whole sample: Jul 1988–Dec 2004</i>			
Constant	0.124*** (5.017)	0.162*** (7.947)	0.111*** (5.272)
M_t	-0.111*** (-3.947)	-0.146*** (-5.758)	-0.098*** (-3.702)
$D9912$	0.101*** (2.763)	0.155*** (5.133)	0.098*** (3.150)
$D0012$	0.013*** (2.275)	0.016*** (2.631)	-0.042*** (-3.062)
π_t	0.488*** (3.111)		
ρ_t		0.161* (1.909)	
i_t			0.387*** (4.153)
<i>Subsample [1]: Jul 1988–May 2001</i>			
Constant	0.103*** (5.123)	0.131*** (7.121)	0.089*** (4.379)
M_t	-0.075*** (-3.337)	-0.094*** (-4.029)	-0.056*** (-2.208)
$D9912$	0.055* (1.939)	0.088*** (3.198)	0.045 (1.532)
$D0012$	-0.001 (-0.129)	-0.003 (-0.476)	-0.050*** (-5.482)
π_t	0.446*** (3.044)		
ρ_t		0.125*** (2.057)	
i_t			0.331*** (5.193)
<i>Subsample [2]: Jan 1995–Oct 2000</i>			
Constant	0.105*** (3.378)	0.089*** (3.452)	0.008 (0.239)
M_t	-0.069*** (-3.288)	-0.051*** (-2.712)	-0.015 (-0.827)
$D9912$	0.019 (0.639)	0.012 (0.553)	-0.017 (-0.868)
π_t	0.780* (1.929)		
ρ_t		0.831*** (2.672)	
i_t			1.436*** (4.297)

Continues on next page

TABLE 5 continued

Independent variables	R_t	R_t	R_t
	<i>Subsample [3]: Jun 2001–Dec 2004</i>		
Constant	0.081*** (4.726)	0.107*** (8.360)	0.016*** (2.230)
M_t	-0.061*** (-3.562)	-0.092*** (-5.649)	-0.015*** (-2.233)
π_t	0.094 (0.390)		
ρ_t		-0.231* (-1.836)	
i_t			1.019*** (12.248)

Notes: t-statistics are reported in parentheses under the corresponding estimated parameters, where the underlying standard errors are (White's) heteroscedasticity-consistent standard errors. *, ** and *** correspond to statistical significance at the 10 per cent, 5 per cent and 1 per cent levels respectively. $D0012$ is not usable in subsample [2], and neither $D9912$ nor $D0012$ is usable in subsample [3], to avoid singularity.

Due to the persistence of the variables of concern, there might be a problem of serial correlation in our estimates. Lagged values of the dependent variable have not been included in either Table 4 or Table 5. This kind of specification may raise suspicion about the robustness of the results. For instance, if real interest rates and maturity are both serially correlated variables, estimating an equation without a lagged dependent variable, or without correction for serial correlation, may make the maturity variable statistically significant only because it is a proxy for the lagged dependent variable or the serial correlation correction.¹⁷ Consequently, we have re-generated our specifications in Tables 4 and 5 by adding three lagged values of dependent and, in the case of the nominal-interest-rate regressions, deflating variables as regressors.¹⁸ Tables 6 and 7 are the counterparts of Tables 4 and 5 respectively.¹⁹

¹⁷See Hamilton (1994, pages 557–62) for a discussion of these issues.

¹⁸The choice of three lags is due to the frequency of the financial statements prepared for the majority of financial institutions in Turkey. The basic results were robust for a set of alternative lag structures.

¹⁹We have also performed the Ljung–Box (1978) tests (up to six lags) and could reject the null hypothesis of no autocorrelation for all specifications reported in Tables 4 and 5 (not reported in the paper).

TABLE 6
Real interest-rate-maturity relationships: monthly data

	Whole sample: Jul 1988–Dec 2004		Subsample [1]: Jul 1988–May 2001		Subsample [2]: Jan 1995–Oct 2000		Subsample [3]: Jun 2001–Dec 2004	
	r_t^x	r_t^i	r_t^x	r_t^i	r_t^x	r_t^i	r_t^x	r_t^i
Constant	0.046* (1.795)	0.067 (1.282)	0.050*** (2.565)	0.017 (0.521)	0.036*** (3.011)	0.025*** (2.238)	0.006 (1.207)	0.010*** (2.313)
M_t	-0.050 (-1.438)	-0.068 (-0.996)	-0.055*** (-2.070)	-0.018 (-0.350)	-0.026*** (-2.402)	-0.014 (-1.498)	0.002 (0.335)	-0.010*** (-2.245)
$D9912$	0.019 (0.483)	0.054 (0.684)	0.024 (0.797)	0.001 (0.020)	-0.018* (-1.887)	-0.019*** (-2.062)		
$D0012$	0.016*** (2.132)	0.020 (1.413)	0.017*** (2.644)	-0.101*** (-5.760)				
r_{t-1}^x	0.491*** (3.258)		0.475*** (3.181)		0.448*** (2.314)		0.696*** (5.148)	
r_{t-2}^x	0.026 (0.168)		0.018 (0.119)		0.134 (0.714)		0.023 (0.188)	
r_{t-3}^x	0.063 (0.526)		0.085 (0.806)		0.015 (0.099)		-0.122 (-1.282)	
r_{t-1}^i		0.441*** (2.822)		0.531*** (2.556)		0.221 (1.337)		0.318* (1.932)
r_{t-2}^i		-0.117 (-0.778)		-0.284 (-1.641)		0.254*** (1.985)		0.002 (0.017)
r_{t-3}^i		0.050 (0.479)		0.097 (0.793)		0.165 (1.364)		-0.016 (-0.155)
r_{t-1}^j		0.214 (1.321)		0.227 (1.297)		0.469*** (3.388)		0.627*** (4.529)
r_{t-2}^j		0.432 (1.282)		0.340 (1.166)		0.059 (0.333)		-0.206 (-1.579)
r_{t-3}^j		0.083 (0.413)		-0.045 (-0.212)		0.194* (1.654)		0.077 (0.666)

TABLE 7
Nominal interest-rate-maturity relationships: monthly data

	Whole sample: Jul 1988-Dec 2004		Subsample [1]: Jul 1988-May 2001		Subsample [2]: Jan 1995-Oct 2000		Subsample [3]: Jun 2001-Dec 2004	
	R_t	R_t	R_t	R_t	R_t	R_t	R_t	R_t
Constant	0.005** (1.962)	0.007*** (2.744)	0.010*** (2.608)	0.009*** (2.981)	0.006 (0.725)	0.015*** (2.641)	-0.017*** (-2.086)	-0.006 (-0.949)
M_t	-0.005* (-1.806)	-0.006** (-1.964)	-0.007*** (-2.243)	-0.007*** (-2.133)	-0.010* (-1.779)	-0.007** (-1.852)	0.016*** (2.215)	-0.006 (-1.023)
$D9912$	-0.014*** (-2.980)	-0.011*** (-2.868)	-0.011*** (-2.417)	-0.010*** (-2.543)	-0.055*** (-3.689)	-0.021*** (-3.330)		
$D0012$	0.008*** (9.083)	0.008*** (8.939)	0.007*** (4.427)	0.008*** (4.448)				
R_{t-1}	0.857*** (7.470)	0.799*** (6.704)	0.845*** (6.969)	0.766*** (5.343)	0.695*** (2.702)	0.543*** (3.285)	0.869*** (5.869)	0.866*** (5.854)
R_{t-2}	-0.163 (-1.034)	-0.086 (-0.587)	-0.147 (-0.819)	-0.076 (-0.465)	-0.065 (-0.182)	0.046 (0.234)	0.121 (0.537)	0.094 (0.361)
R_{t-3}	0.190 (1.641)	0.186* (1.710)	0.187 (1.426)	0.192 (1.497)	-0.037 (-0.148)	0.179 (1.276)	0.010 (0.081)	0.045 (0.288)
π_t	0.162 (1.622)		0.109 (1.249)		1.697*** (2.802)		0.439*** (3.011)	
π_{t-1}	0.002 (0.031)		0.019 (0.237)		-0.758*** (-2.190)		-0.149* (-1.733)	
π_{t-2}	-0.019 (-0.360)		-0.015 (-0.287)		-0.307* (-1.659)		-0.091 (-1.383)	
π_{t-3}	-0.022 (-0.348)		-0.042 (-0.572)		0.208 (1.294)		0.048 (1.220)	

Continues on next page

TABLE 7 continued

	Whole sample: Jul 1988–Dec 2004		Subsample [1]: Jul 1988–May 2001		Subsample [2]: Jan 1995–Oct 2000		Subsample [3]: Jun 2001–Dec 2004	
	R_t	R_t	R_t	R_t	R_t	R_t	R_t	R_t
ρ_t	0.081*	0.084	0.084	0.084	0.664***	0.664***	0.042*	0.042*
	(1.891)	(1.622)	(1.622)	(1.622)	(2.266)	(2.266)	(1.690)	(1.690)
ρ_{t-1}	0.010	0.008	0.008	0.008	-0.099	-0.099	0.019	0.019
	(0.281)	(0.157)	(0.157)	(0.157)	(-0.584)	(-0.584)	(1.161)	(1.161)
ρ_{t-2}	0.012	0.028	0.028	0.028	-0.185	-0.185	-0.017	-0.017
	(0.526)	(0.814)	(0.814)	(0.814)	(-1.445)	(-1.445)	(-1.109)	(-1.109)
ρ_{t-3}	-0.025	-0.045	-0.045	-0.045	-0.165	-0.165	0.013	0.013
	(-1.080)	(-1.444)	(-1.444)	(-1.444)	(-1.493)	(-1.493)	(1.396)	(1.396)
i_t	0.099	0.027	0.027	0.027	0.842***	0.842***	0.751	0.751
	(1.414)	(0.458)	(0.458)	(0.458)	(2.475)	(2.475)	(1.463)	(1.463)
i_{t-1}	0.108***	0.131***	0.131***	0.131***	-0.010	-0.010	-0.264	-0.264
	(3.145)	(4.048)	(4.048)	(4.048)	(-0.048)	(-0.048)	(-0.314)	(-0.314)
i_{t-2}	-0.059	-0.034	-0.034	-0.034	-0.178	-0.178	0.107	0.107
	(-1.624)	(-0.965)	(-0.965)	(-0.965)	(-0.814)	(-0.814)	(0.225)	(0.225)
i_{t-3}	-0.039	-0.039	-0.039	-0.039	-0.155	-0.155	-0.193	-0.193
	(-1.373)	(-2.171)	(-2.171)	(-2.171)	(-0.885)	(-0.885)	(-0.450)	(-0.450)

Notes: t-statistics are reported in parentheses under the corresponding estimated parameters, where the underlying standard errors are (White's) heteroscedasticity-consistent standard errors. *, ** and *** correspond to statistical significance at the 10 per cent, 5 per cent and 1 per cent levels respectively. D0012 is not usable in subsample [2], and neither D9912 nor D0012 is usable in subsample [3], to avoid singularity.

Notes to Table 6: t-statistics are reported in parentheses under the corresponding estimated parameters, where the underlying standard errors are (White's) heteroscedasticity-consistent standard errors. *, ** and *** correspond to statistical significance at the 10 per cent, 5 per cent and 1 per cent levels respectively. $D0012$ is not usable in subsample [2], and neither $D9912$ nor $D0012$ is usable in subsample [3], to avoid singularity.

The estimates of Table 6 suggest the same negative relationship between maturity and real interest rates. However, the level of statistical significance has dropped considerably. For the whole sample, maturity has negative coefficients in all cases, but they are not statistically significant. In subsample [1], the coefficient of maturity is negative and significant only for r_t^π . For r_t^ρ and r_t^i , it is negative as well, but not statistically significant. Subsample [2] suggests a similar pattern of estimates, although the slope of the yield curve is smaller in magnitude. In the last subsample, for r_t^π and r_t^ρ , the coefficient of maturity turns positive, but these positive estimates are not statistically significant; for r_t^i , the maturity variable has a negative and significant coefficient estimate, implying a negatively sloped yield curve.

Similar to the relationship between Table 6 and Table 4, Table 7 verifies the findings of Table 5. Indeed, inclusion of the lagged dependent variable as a regressor remedied the residuals' autocorrelation problem in practically all the specifications and subsamples, without altering the key findings.²⁰ Although the aforementioned non-normality of data in the whole sample and in subsample [1] affected the normality of the residuals in the estimations for these sample episodes, it did not change the quality of our findings.²¹

As mentioned previously, we have also assessed the robustness of our specifications to the existence of the financial crises in our sample span. The Chow test statistics, which are presented in Table 8, provide support for our segmentation of the whole sample into subsamples.

All in all, the negative linkage between interest rates and maturity that we have revealed using auction data, presented in Table 3, remained intact despite changes in the data structure – i.e. using monthly data instead of auction data – and despite different specifications – i.e. specifications that include, versus those that do not include, the lagged values of the dependent variable as right-hand-side variables. However, the signs and significance levels of our parameter estimates do differ in the pre-June-2001 and post-May-2001 samples.

The findings for the pre-June-2001 subsamples are in line with our elaboration and interpretation of Alesina, Prati and Tabellini (1990), the model that is presented in Section II, as well as Giavazzi and Pagano (1990),

²⁰Based on the Ljung–Box (1978) tests (not reported).

²¹Based on Jarque–Bera (1987) tests (not reported).

Alesina et al. (1992), Calvo and Guidotti (1992) and Missale and Blanchard (1994).

TABLE 8
Chow breakpoint tests

Breakpoints tested	Deflating variable		
	π_t	ρ_t	i_t
	<i>Table 3 specification</i>		
1994:04 and 2001:02 in the whole sample	22.88*** (0.000)	20.59*** (0.000)	11.90*** (0.000)
1994:04 in the pre-November-2000 subsample	42.18*** (0.000)	40.91*** (0.000)	25.50*** (0.000)
2001:02 in the post-December-1994 subsample	3.85** (0.022)	2.22 (0.109)	14.46*** (0.000)
	<i>Table 4 specification</i>		
1994:04 and 2001:02 in the whole sample	5.66*** (0.000)	8.39*** (0.000)	3.52*** (0.008)
1994:04 in the pre-November-2000 subsample	-0.56 (1.000)	-5.90 (1.000)	11.76*** (0.000)
2001:02 in the post-December-1994 subsample	11.85*** (0.000)	6.34*** (0.002)	5.89*** (0.004)
	<i>Table 5 specification</i>		
1994:04 and 2001:02 in the whole sample	4.90*** (0.000)	6.20*** (0.000)	9.04*** (0.000)
1994:04 in the pre-November-2000 subsample	4.46*** (0.005)	5.62*** (0.001)	10.31*** (0.000)
2001:02 in the post-December-1994 subsample	9.99*** (0.000)	28.68*** (0.000)	17.08*** (0.000)
	<i>Table 6 specification</i>		
1994:04 and 2001:02 in the whole sample	1.86* (0.053)	2.24** (0.017)	4.55*** (0.000)
1994:04 in the pre-November-2000 subsample	-0.87 (1.000)	-2.93 (1.000)	7.61*** (0.000)
2001:02 in the post-December-1994 subsample	2.94** (0.015)	2.85** (0.018)	1.84 (0.109)
	<i>Table 7 specification</i>		
1994:04 and 2001:02 in the whole sample	3.15*** (0.000)	2.94*** (0.000)	1.35 (0.159)
1994:04 in the pre-November-2000 subsample	2.25** (0.022)	1.09 (0.367)	1.23 (0.276)
2001:02 in the post-December-1994 subsample	1.44 (0.180)	1.22 (0.288)	1.27 (0.260)

Notes: F-statistics and the p-values (in parentheses) of the Chow tests are provided in the table. *, ** and *** correspond to rejection of the null hypothesis at the significance levels of 10 per cent, 5 per cent and 1 per cent respectively. For each specification, three tests are computed. In the first test, the null hypothesis that no structural break exists is jointly tested for April 1994 and February 2001 over the whole-sample estimates. In the second test, the April 1994 structural break is tested over the pre-November-2000 subsample. The third test considers the February 2001 break over the post-December-1994 period.

IV. Discussion and concluding remarks

1. Discussion

In subsection III.4, the auction-based estimates suggested that the slope of the yield curve is negative for Turkish treasury auctions, which is repeatedly revealed in the whole sample, in the July 1988 to May 2001 sample and in the January 1995 to October 2000 sample. However, we observe a change in this pattern from June 2001, when the maturity variable attains a significantly negative coefficient estimate only when the nominal interest rate on auctions is deflated by the interbank interest rate to obtain the real interest rate. Maturity does not have a significant coefficient in the other regressions. At this point, it is important to summarise to what extent our empirical findings remain intact and where they display a pattern change.

First of all, the findings on auction data are further supported by our monthly estimates in subsection III.5, regardless of the relationship estimated for nominal or real measures of return. That is, whether we estimate equation 1 or equation 2 of subsection III.3, we have revealed the same evidence as we had on auction data.

Second, the between-crises subsample is the most stable episode in terms of the durability of empirical findings. This situation augments our views on the low public confidence in the governments' debt management policies in Turkey for the 1995–2000 period.

Third, the post-May-2001 sample yields a radical pattern change. In most cases, in the post-May-2001 episode, we observe that the real auction return computed by using the interbank interest rate is still negatively associated with maturity of debt. However, the sign of the coefficient on maturity turns positive in other cases, along with lower statistical significance. That is, people's perception with regard to the rate of inflation and the depreciation of the Turkish lira must have changed after May 2001. In the light of recent Turkish policymaking experience, this might be intuitive. Indeed, the policy view of the Central Bank of the Republic of Turkey toward reducing inflation was formulated and has been implemented in terms of the 'implicit inflation targeting' framework and the Bank was set to an 'independent' position starting in April–May 2001. After this date, the Bank manifested its fundamental goal as the stability of prices. The exchange-rate regime, in the same episode, was set as the 'floating exchange rate' regime.²² Eventually, the changes in the public perception of inflation and currency depreciation can be considered as a consequence of these changes in the monetary policymaking framework.²³

²²The exchange-rate regime is determined by the government, together with the Central Bank of the Republic of Turkey, and implemented by the Central Bank, as required by the Central Bank Law.

²³It should also be noted that the primary surplus target of the stabilisation programme started in June 2001, which is also supported by the International Monetary Fund, helped in reducing the need to

2. Concluding remarks

On the theoretical front, the further elaboration of the Alesina, Prati and Tabellini (1990) model, as presented in Section II and Appendix A, suggests a negative relationship between the treasury auction interest rates and auction maturity, under the assumption of a non-zero default risk and confidence crises. Our study provides empirical evidence from the Turkish economy on this relationship. We have performed our analysis through two types of data-sets. First, we have used a data-set that contains the data from each treasury auction. Second, we have used monthly data, which were obtained from the first data-set through aggregation.

The finding of a *downward-sloping yield curve* is quite consistent with some specific conditions of the Turkish economy, such as chronic high and volatile levels of inflation, a high and volatile default risk, frequent occurrences of financial crisis, an inflation–devaluation cycle and the low credibility of policymakers, specifically until mid-2001. Due to real return and default risks, those conditions shape the maturity–return relationship in a different way from the case for developed countries. In this set-up, the low credibility of policymakers makes shorter auction maturities and higher interest rates necessary. Consequently, once the market is unable to generate its long-term assets, returns on treasury bills are pushed far above the generally prescribed levels. As far as the outcome is concerned, it can be argued that such management of debt is expected to be self-promoting and further unsustainability of debt is unavoidable. The post-May-2001 developments should be studied in more depth in order to reach a better understanding of possible changes in macroeconomic fundamentals. This may gain feasibility over time, as more observations are accumulated.

Appendix: The Alesina, Prati and Tabellini (1990) model

Here, we present a formal model that reveals a negative relationship between the treasury auction maturity and interest rates. In order to do this, we employ an infinite-horizon model, based on that of Alesina, Prati and Tabellini (1990), which maximises a representative individual's lifetime utility function and minimises the government's loss function.

In this model, a small economy is inhabited by an infinitely-lived individual who maximises her lifetime utility:

generate new debt. As the expenditures of the political authority are radically restricted, the scepticism regarding the rollover of existing debt stock was limited after May 2001. Another important ingredient of the recent political climate of Turkey can be marked as the switch from a sequence of coalitional governments to a majority cabinet in the Grand National Assembly. These observations highlight the reduction of fiscal risks and political uncertainties.

$$(1) \quad U = \sum_{t=0}^{\infty} \beta^t u(c_t) \quad \text{for } 1 > \beta > 0$$

where c_t denotes consumption at time t and $u(\cdot)$ is a regular concave utility function. In each period, the individual is endowed with one unit of non-storable output and she pays a distortionary tax, τ_t , to the government. The consumer's disposable income is given by $F(\tau_t)$, which is expressed as

$$(2) \quad F(\tau_t) = 1 - \tau_t - f(\tau_t)$$

where $f(\cdot)$ shows the distortion of tax, with $f(0) = 0$, $f'(\cdot) > 0$ and $f''(\cdot) > 0$. The convexity of $f(\cdot)$ allows us to capture the tax-smoothing behaviour.

Consumers have access to perfect international capital markets in which they can borrow and lend at a risk-free interest rate equal to their discount factor, $1/\beta$. We denote those external tax-free assets held as of the beginning of period t by ψ_t .

There exist short-term and long-term debts with designated maturities of one period and two periods respectively. The utility-maximising individual has the following budget constraint:

$$(3) \quad c_t + \beta \psi_{t+1} + {}_t q_{t+1} {}_t b_{t+1} + {}_t q_{t+2} {}_t b_{t+2} \\ \leq F(\tau_t) + \psi_t - D(\theta_t) + {}_{t-1} b_t (1 - \theta_t) + {}_{t-2} b_t (1 - \theta_t)$$

where ${}_i b_j$ denotes debt issued in period i and maturing in period j and ${}_i q_j$ is the corresponding market price. $D(\theta_t)$ and θ_t are the cost of repudiation and the fraction of the debt repudiated at time t respectively. The default parameter, θ_t , is assumed to be the same for both types of debt maturing at time t . Alesina et al. (1990) assume that the cost of default is such that $D(\theta_t) = 0$ if $\theta_t = 0$ or $\theta_{t-i} = 1$ and $i > 0$, and $D(\theta_t) = \alpha$ otherwise.²⁴

The government's budget constraint is given by

$$(4) \quad {}_{t-1} b_t (1 - \theta_t) + {}_{t-2} b_t (1 - \theta_t) \leq \tau_t + {}_t b_{t+1} {}_t q_{t+1} + {}_t b_{t+2} {}_t q_{t+2}$$

and the no-arbitrage condition is expressed as

²⁴The timing of the events in the auction process is as follows. First, the government determines the maturity of the borrowings (one- versus two-period). Then it announces the prices at which it is willing to sell the debt, and the maximum amounts for sale for each maturity. Later, on the basis of these prices, the private sector chooses how much debt to buy. Finally, the government chooses the combination of τ_t and θ_t that satisfies the government budget constraint, given the amount of debt outstanding and the debt just sold. The following should hold at an equilibrium: (i) in each period and for all sequences of previous aggregate histories, the prices are optimal for the government, given the private sector reaction to the announced prices; (ii) the private sector portfolio decision is optimal, given the prices and the expected future equilibrium outcomes; and (iii) the choices of τ_t and θ_t are optimal for the government, given the private current investment decision and the effect of the current policy on the expected future equilibrium outcomes.

$$(5) \quad {}_t q_{t+1} = \beta(1 - \theta_{t+1}^e) {}_t q_{t+2} = \beta^2(1 - \theta_{t+2}^e)$$

where the superscript e is used to denote private expectations.

If the government does not default in the absence of a confidence crisis, the discounted present value of the debt as of the beginning of period 0 is given by

$$(6) \quad b \equiv {}_{-1}b_0 + {}_{-2}b_0 + \beta {}_{-1}b_1$$

and the optimal tax rate becomes

$$(7) \quad \tau_t = (1 - \beta)b \equiv \tau^* \quad \text{for } t = 0, 1, \dots$$

The government, in the absence of a crisis, will not repudiate if

$$(8) \quad \alpha \geq \frac{1}{1 - \beta} f[(1 - \beta)b] \equiv \underline{\alpha}.$$

Inequality (8) implies that the government will not repudiate if the cost of repudiation, α , is larger than the tax distortions needed for servicing the debt, $\underline{\alpha}$.

Now consider a confidence crisis in period t . If the private expectations, θ_{t+i}^e for $i > 0$, do not depend on the aggregate history of the game in previous periods and if $\theta_{t+i}^e = 1$ for $i > 0$, then in period t the government can either default or repay the debt. In the first case, consumption is

$$(9) \quad c_t = (1 - \beta)\psi_0 + 1 - \alpha(1 - \beta) \equiv c^d,$$

whereas in the latter case, taxes have to be as follows:

$$(10) \quad \tau_t = {}_{t-1}b_t + {}_{t-2}b_t;$$

$$(11) \quad \tau_{t+1} = {}_{t-1}b_{t+1};$$

$$(12) \quad \tau_s = 0 \quad \text{for } s > t + 1.$$

If the government chooses to repay, consumption from t onwards is

$$(13) \quad c_s^R = 1 + \psi_t(1 - \beta) - (1 - \beta)[f({}_{t-1}b_t + {}_{t-2}b_t) + \beta f({}_{t-1}b_{t+1})] \quad \text{for } s \geq t.$$

Comparing the consumption figures in the two cases, we can say that the government chooses to repay if and only if

$$(14) \quad \alpha \geq [f({}_{t-1}b_t + {}_{t-2}b_t) + \beta f({}_{t-1}b_{t+1})] \equiv \bar{\alpha}_t.$$

It should be clear that $\bar{\alpha}_t$ is the counterpart of $\underline{\alpha}$ in the case of a confidence crisis.

It can be shown that, since no debt is repaid between periods 0 and t , $\bar{\alpha}_t > \underline{\alpha}$ for all t . Hence, if $\bar{\alpha}_t > \alpha \geq \underline{\alpha}$, then there exists an equilibrium in which a confidence crisis occurs in period t or earlier. Thus $\bar{\alpha}_t$ depends on the maturity structure of the public debt.

A consequent proposition in Alesina et al. (1990) demonstrates that equilibrium with a confidence crisis is less likely to occur if (i) only long-term debt is issued and (ii) the same amount of debt matures in each period. This is shown by minimising $\bar{\alpha}_t$ by the choice of three borrowing variables, ${}_{t-2}b_t$, ${}_{t-1}b_t$ and ${}_{t-1}b_{t+1}$, subject to a constant net present value of debt, which is given by

$$(15) \quad {}_{t-1}b_t + {}_{t-2}b_t + \beta {}_{t-1}b_{t+1} \equiv b \quad \text{for } t = 0, 1, \dots$$

The first-order conditions of this minimisation problem imply

$$(16) \quad {}_{t-1}b_t + {}_{t-2}b_t = {}_{t-1}b_{t+1}.$$

Since the maximal element, $\bar{\alpha}^*$, is minimised when all the elements of the sequence $\bar{\alpha}_t$ are minimised and since this happens when equation 16 holds for all t , combining equations 15 and 16 obtains ${}_{t-1}b_t = 0$ and ${}_{t-2}b_t = {}_{t-1}b_{t+1}$ for all t . In other words, only the two-period (i.e. long-maturity) debt must be issued and an equal amount of debt should mature in each period.

If the maturity shortens, by using equations 14 and 15, $\bar{\alpha}_t$ increases. In other words, the cost of tax distortions becomes higher and thus the fraction of the repudiated debt increases. When θ_t increases, by using the no-arbitrage condition given by equation 5, it is apparent that bond price, q_t , decreases. This reduction in bond price corresponds to an increase in the real interest rate on the bond. In a nutshell, Alesina et al. (1990) suggest that there is a negative linkage between the maturity of debt and the yield of bonds, the latter being the dependent variable, when $\alpha \geq \bar{\alpha}_t$. [A]

Another important point in Alesina et al. (1990) concerns the risk premium. Supposing that $\theta_{t+1}^e > 0$ in every period t with a known probability, the problem is re-treated and it is concluded that until a confidence crisis occurs, the government has to pay a risk premium on its liability to compensate for the default risk. Since $\bar{\alpha}_t$ is lower, the risk premium can be reduced by lengthening and balancing the maturity structure of government debt. [B]

Results [A] and [B] together imply a drop in the real yield on bonds as maturity lengthens, and this has been empirically assessed using the Turkish data in Section III.

References

- Alesina, A., Broek, M., Prati, A. and Tabellini, G. (1992), 'Default risk on government debt in OECD countries', *Economic Policy*, vol. 15, pp. 428–63.
- , Prati, A. and Tabellini, G. (1990), 'Public confidence and debt management: a model and a case study of Italy', in M. Draghi and R. Dornbusch (eds), *Public Debt Management: Theory and History*, Cambridge: Cambridge University Press.
- Aydin, S. (2004), 'Faiz oranları oynaklığının modellenmesinde koşullu değişen varyansın rolü' (in Turkish) [The role of autoregressive conditional heteroscedasticity in modelling the volatility of interest rates], Central Bank of the Republic of Turkey, mimeo.
- Barro, R. (1995), 'Optimal debt management', National Bureau of Economic Research, Working Paper no. 5327.
- Berument, H. and Froyen, R. T. (2005), 'Monetary policy and long term interest rates: evidence from weekly data', *Journal of Macroeconomics*, forthcoming.
- and Gunay, A. (2003), 'Exchange rate risk and interest rate: a case study for Turkey', *Open Economies Review*, vol. 14, pp. 19–27.
- and Malatyali, K. (2001), 'Determinants of interest rates in Turkey', *Russian and East European Finance and Trade*, vol. 37, pp. 5–16.
- Calvo, G. (1988), 'Servicing the public debt: the role of expectations', *American Economic Review*, vol. 78, pp. 647–61.
- and Guidotti, P. E. (1990a), 'Credibility and nominal debt', *IMF Staff Papers*, vol. 37, pp. 612–35.
- and — (1990b), 'Indexation and maturity of government bonds', in M. Draghi and R. Dornbusch (eds), *Public Debt Management: Theory and History*, Cambridge: Cambridge University Press.
- and — (1992), 'Optimal maturity of nominal government debt: an infinite-horizon model', *International Economic Review*, vol. 33, pp. 895–919.
- Central Bank of the Republic of Turkey (2003), *Monetary Policy Report*, October, Ankara.
- (2004), *Annual Report 2003*, Ankara.
- (2005), *Annual Report 2004*, Ankara.
- Cook, T. and Hahn, T. (1989), 'The effect of changes in the federal funds rate target on market interest rates in the 1970s', *Journal of Monetary Economics*, vol. 24, pp. 331–51.
- Drudi, F. and Giordano, R. (2000), 'Default risk and optimal debt management', *Journal of Banking and Finance*, vol. 24, pp. 861–91.
- Ertugrul, A. and Selçuk, F. (2001), 'A brief account of the Turkish economy', *Russian and East European Finance and Trade*, vol. 37, pp. 6–28.
- Giavazzi, F. and Pagano, M. (1990), 'Confidence crises and public debt management', in M. Draghi and R. Dornbusch (eds), *Public Debt Management: Theory and History*, Cambridge: Cambridge University Press.
- Grabbe, J. O. (1996), *International Financial Markets*, third edition, New York, NY: Prentice-Hall.
- Hamilton, J. D. (1994), *Time Series Analysis*, Princeton, NJ: Princeton University Press.
- Jarque, C. M. and Bera, A. K. (1987), 'A test for normality of observations and regression residuals', *International Statistical Review*, vol. 55, pp. 163–72.
- Ljung, G. and Box, G. (1978), 'On a measure of lack of fit in time series models', *Biometrika*, vol. 67, pp. 297–303.

- Missale, A. and Blanchard, O. J. (1994), 'The debt burden and debt maturity', *American Economic Review*, vol. 84, pp. 309–19.
- Tobin, J. (1965), 'Money and economic growth', *Econometrica*, vol. 33, pp. 671–84.